



Since 1962

INDIA'S MOST RELIABLE
DESIGNER TILES
& STONE COMPANY

www.thestonepeople.in

ROCK STONE
398 X 800 MM
398 X 398 MM



RS ARTICHIP GRIS BIG & SMALL



RS CANYON NARANJA BIG & SMALL



WALL & FLOOR / INDOOR / OUTDOOR

LET'S MAKE SOMETHING BEAUTIFUL



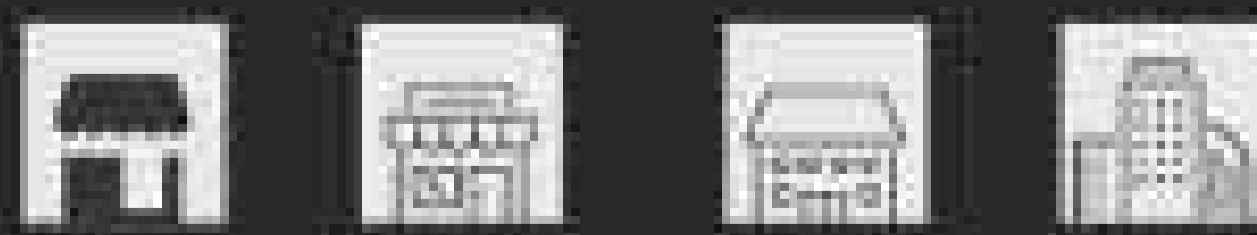
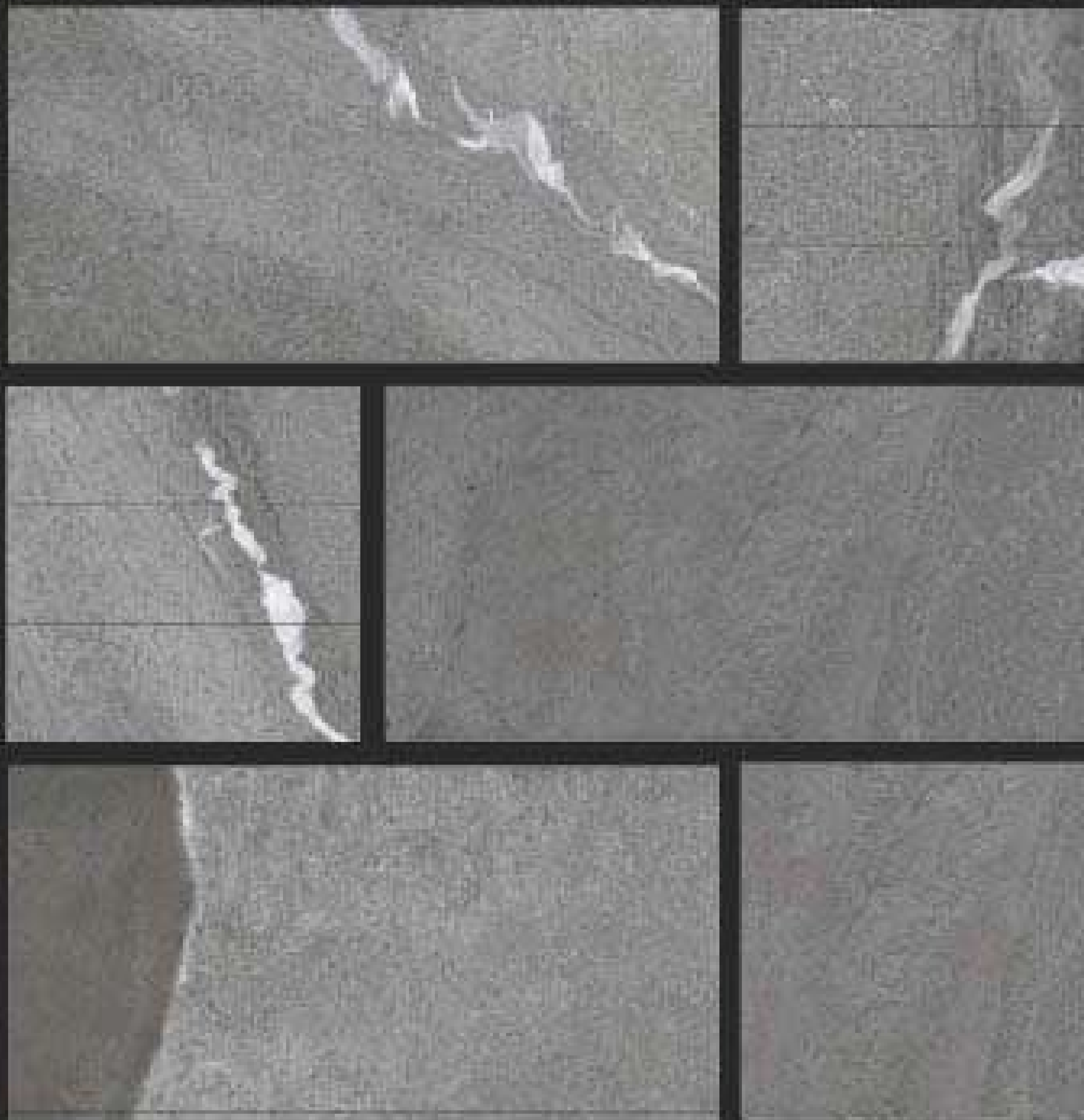
ROCK STONE
398 X 800 MM
398 X 398 MM



RS SLAG STONE TAUPE BIG & SMALL



RS TARIFA GREY BIG & SMALL



WALL & FLOOR / INDOOR / OUTDOOR

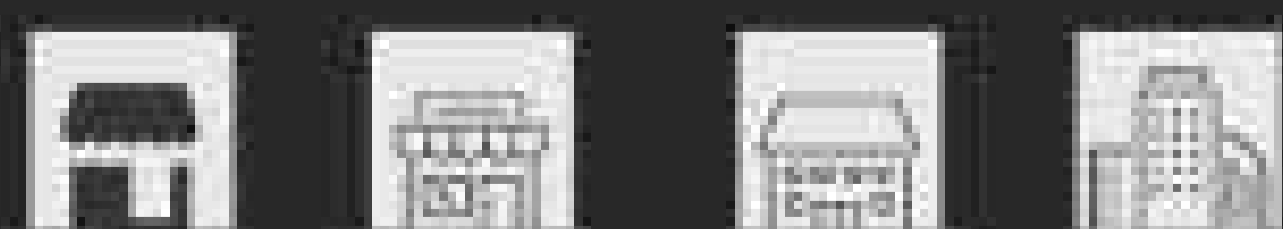
LET'S MAKE SOMETHING BEAUTIFUL



ROCK STONE
398 X 800 MM
398 X 398 MM



RS TARIFA GREY BIG & SMALL



WALL & FLOOR / INDOOR / OUTDOOR

LET'S MAKE SOMETHING BEAUTIFUL



MADE IN INDIA

ROCK STONE
398 X 800 MM
398 X 398 MM



RS SLAG STONE TAUPE BIG & SMALL



WALL & FLOOR / INDOOR / OUTDOOR

LET'S MAKE SOMETHING BEAUTIFUL



MADE IN INDIA

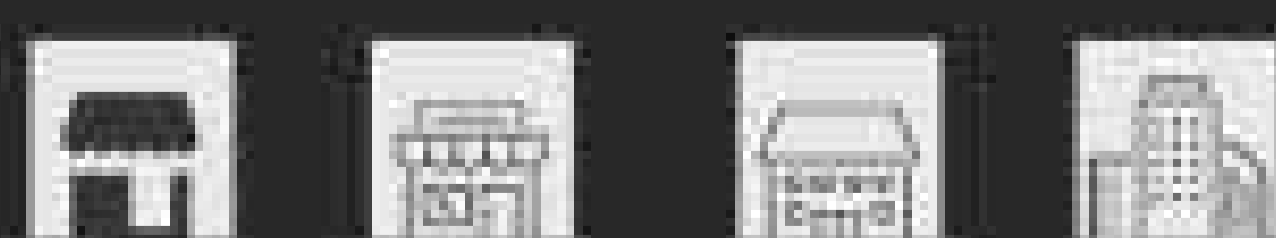
ROCK STONE
398 X 800 MM
398 X 398 MM



RS ARDESIA PERLA BIG & SMALL



RS ALBACETE GRIS BIG & SMALL



WALL & FLOOR / INDOOR / OUTDOOR

LET'S MAKE SOMETHING BEAUTIFUL

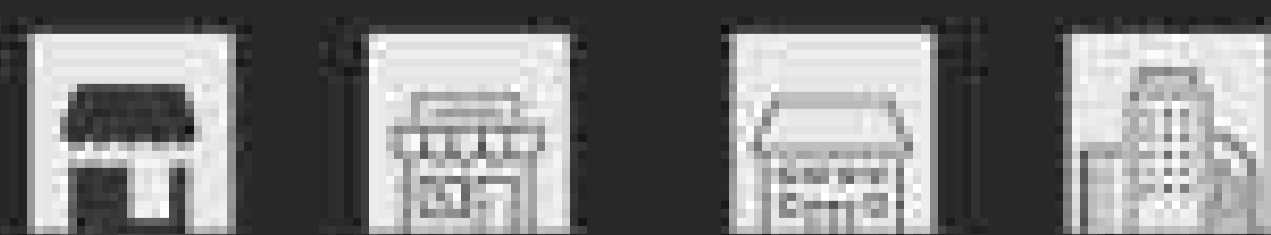


MADE IN INDIA

ROCK STONE
398 X 800 MM
398 X 398 MM



RS ALBACETE GRIS BIG & SMALL



WALL & FLOOR / INDOOR / OUTDOOR

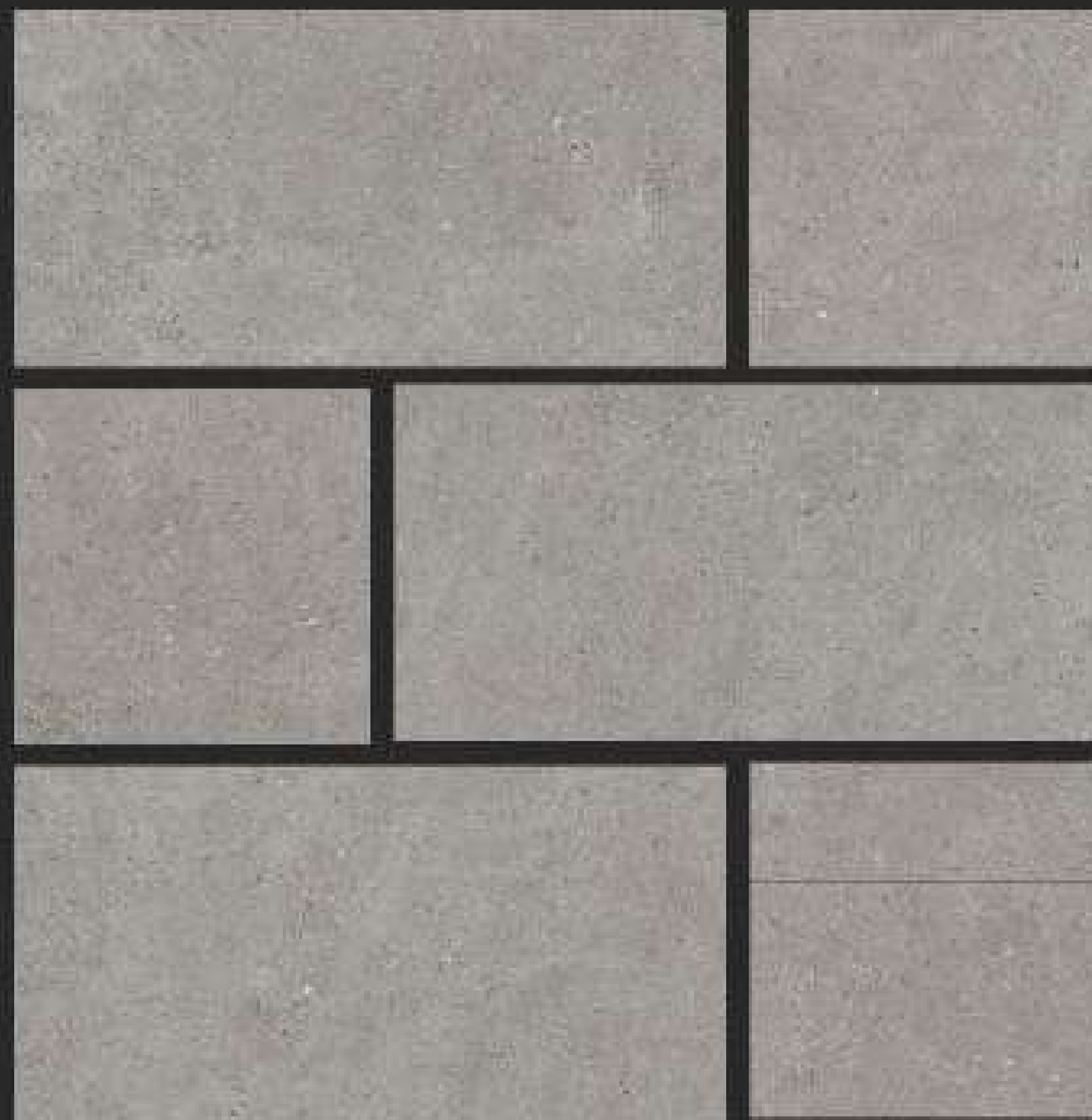
LET'S MAKE SOMETHING BEAUTIFUL



ROCK STONE
398 X 800 MM
398 X 398 MM



RS DIORITE GRIS BIG & SMALL



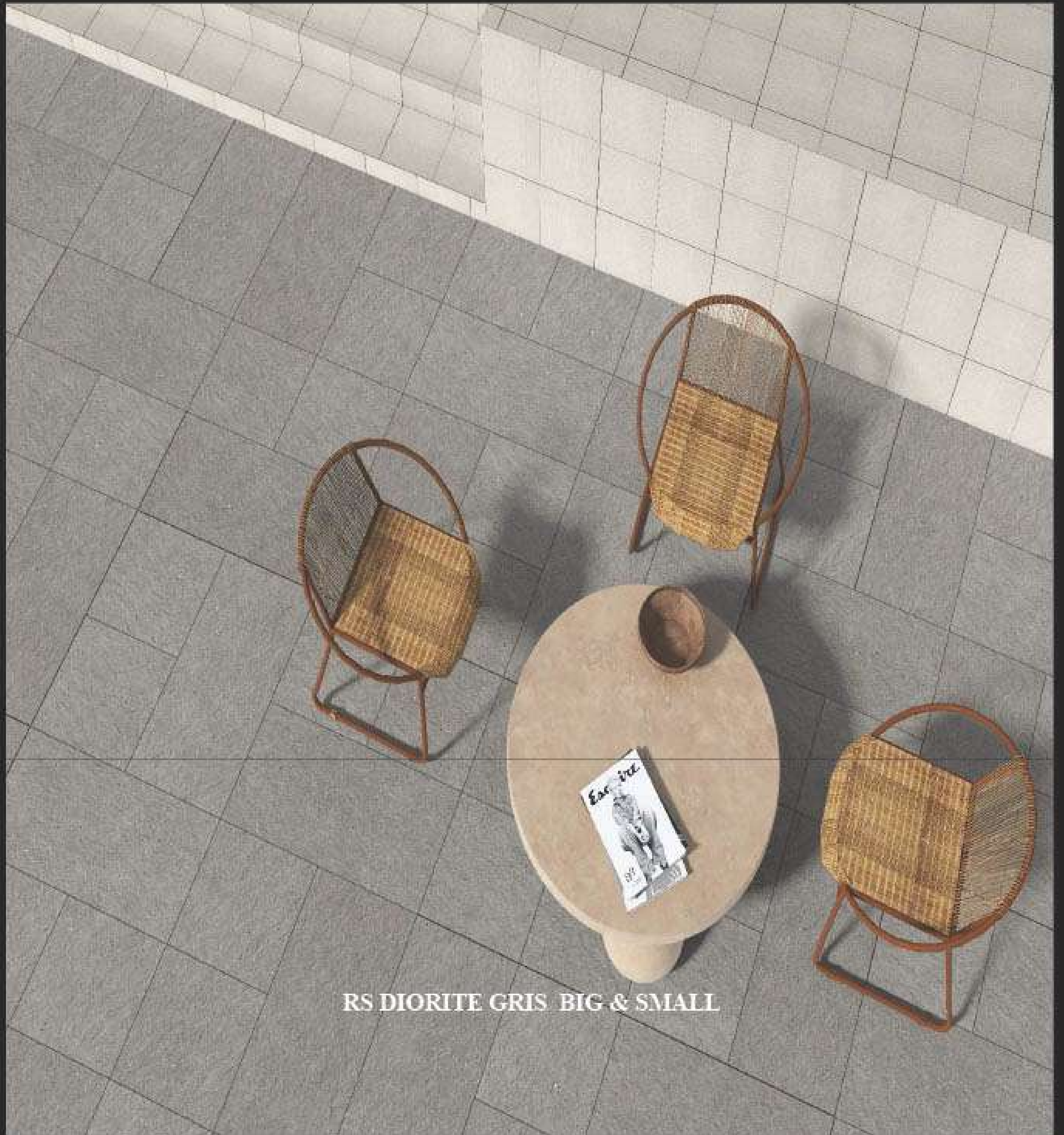
WALL & FLOOR / INDOOR / OUTDOOR

LET'S MAKE SOMETHING BEAUTIFUL

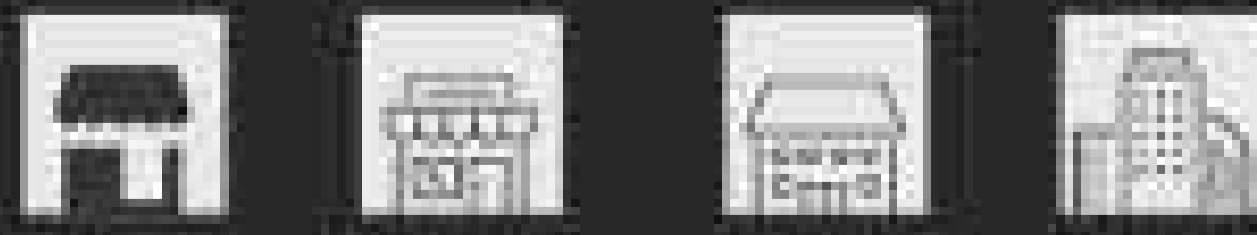


MAKE IN INDIA

ROCK STONE
398 X 800 MM
398 X 398 MM



RS DIORITE GRIS BIG & SMALL



WALL & FLOOR / INDOOR / OUTDOOR

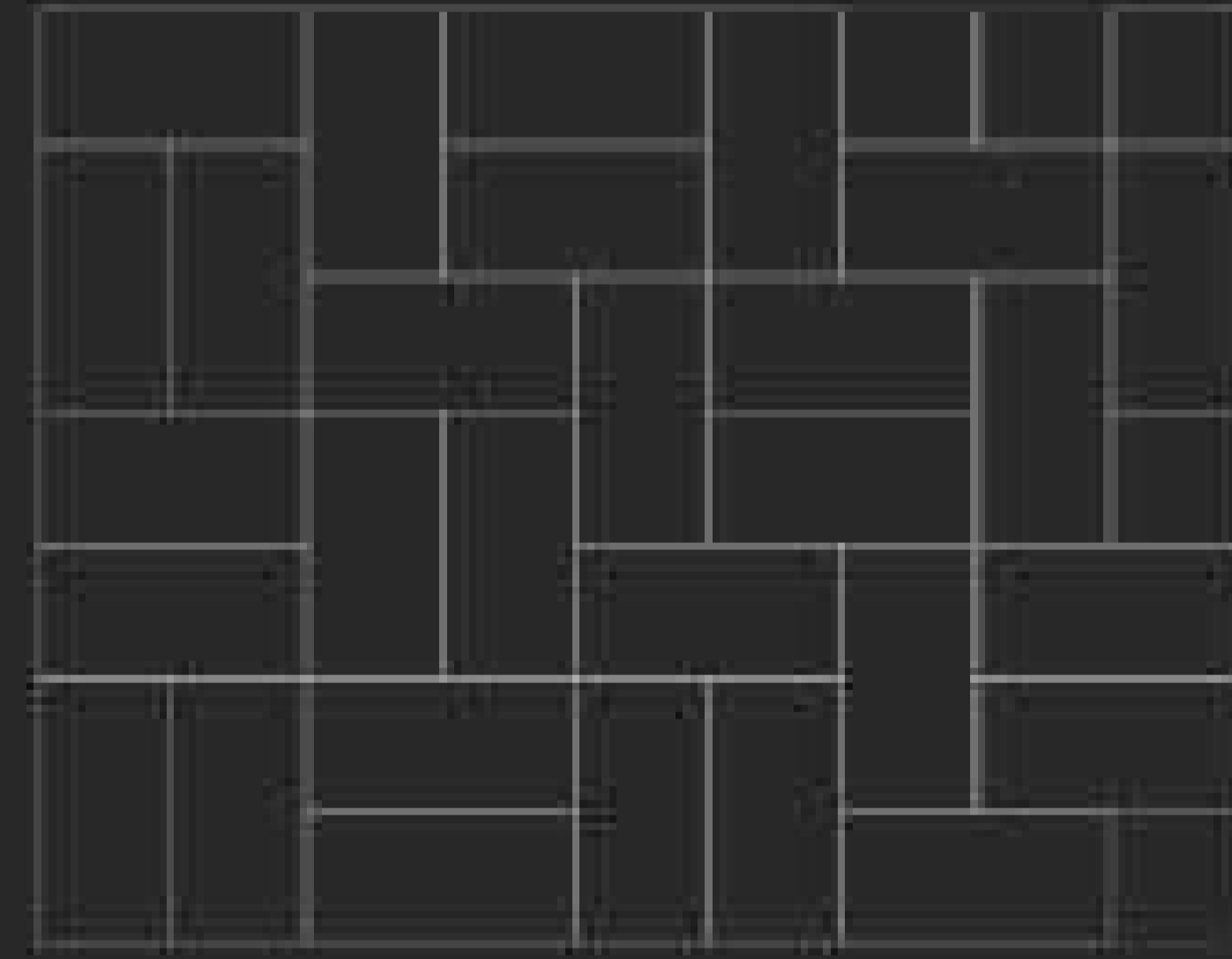
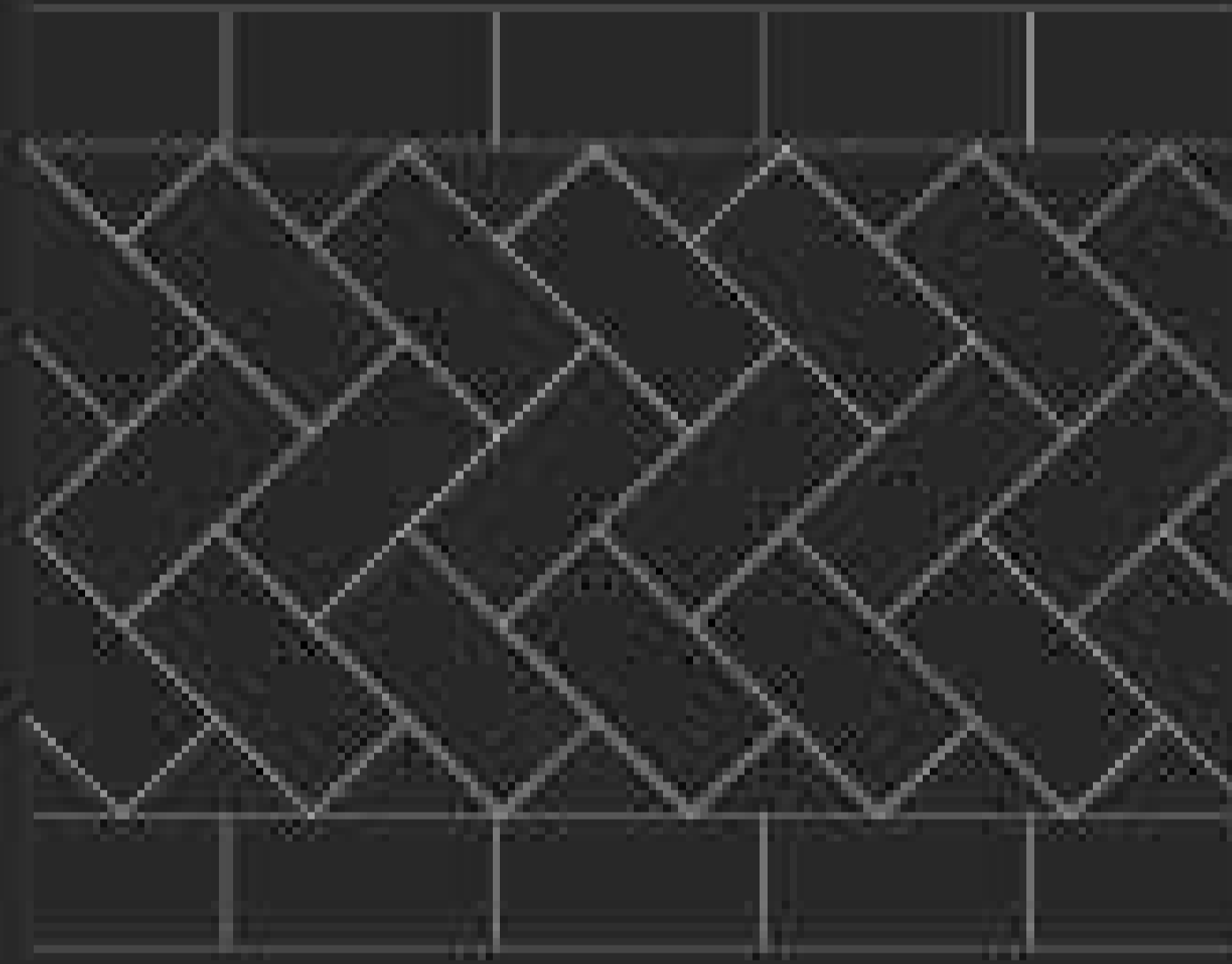
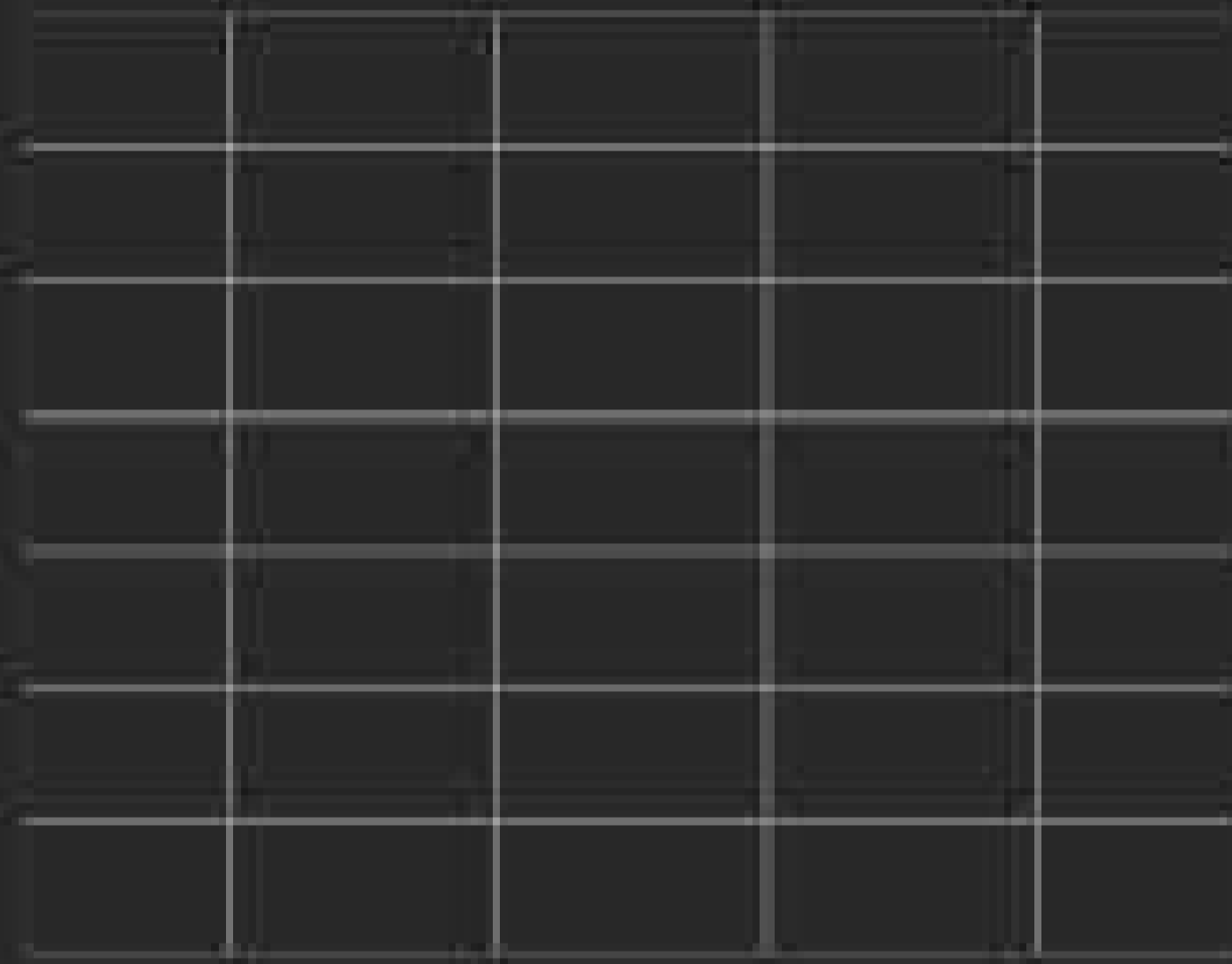
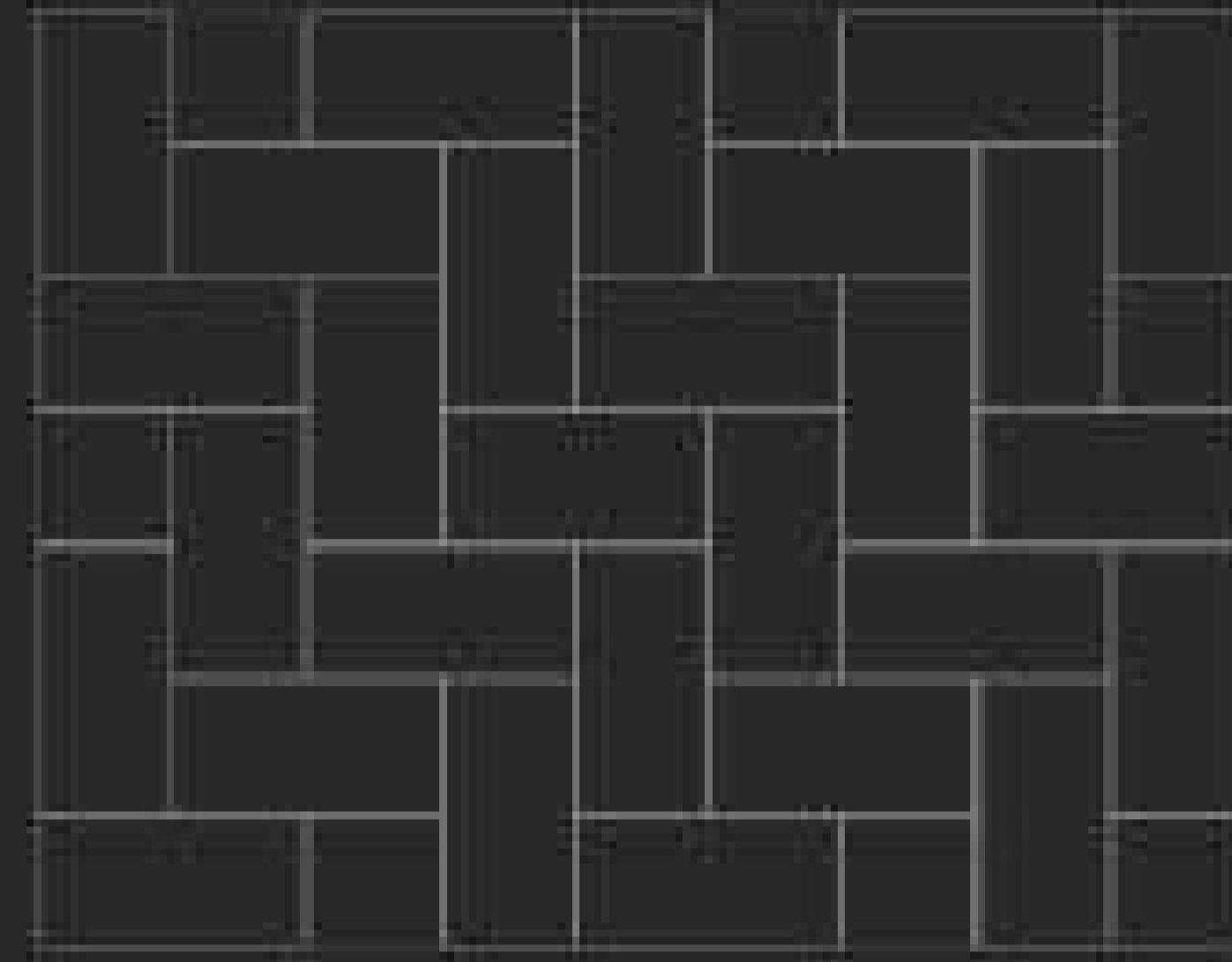
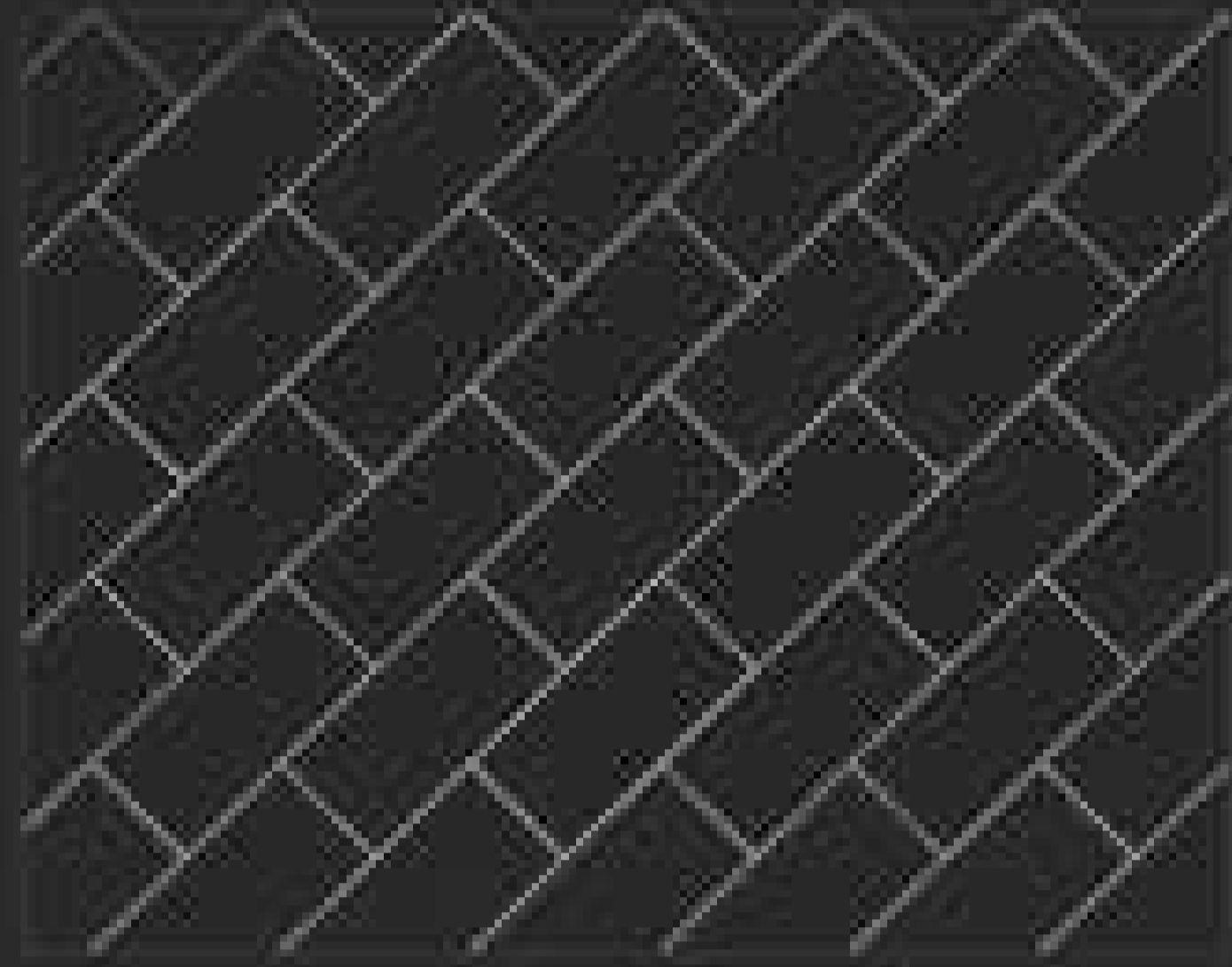
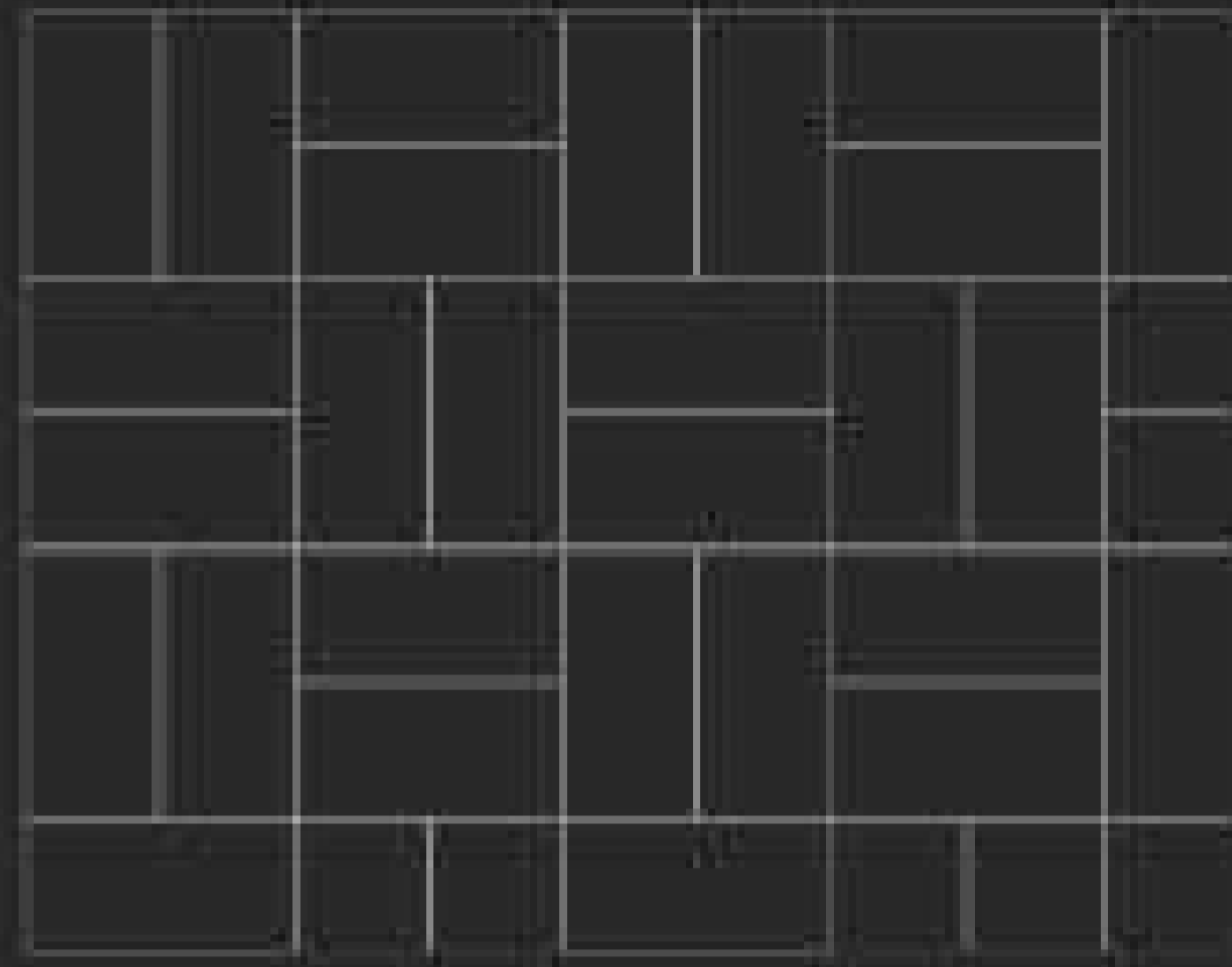
LET'S MAKE SOMETHING BEAUTIFUL



ROCK STONE
 398 X 800 MM
 398 X 398 MM 1



MODULAR PATTERNS

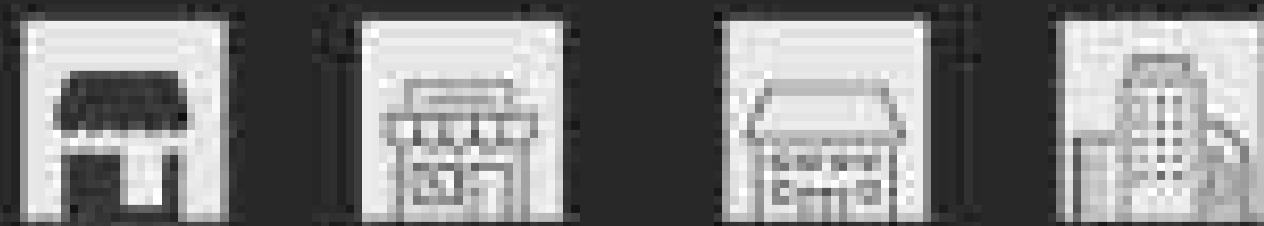


APPLICATION AREA :-

WALL FLOOR EXTERIOR SHOWER WETAREA POOL CAR PARKING TERRACES BALCONY

YES YES YES YES YES YES YES YES YES

FOR PROPER INSTALLATION WE STRONGLY RECOMMEND 4MM GROUT JOINT



WALL & FLOOR / INDOOR / OUTDOOR

LET'S MAKE SOMETHING BEAUTIFUL



ROCK STONE
398 X 800 MM
398 X 398 MM 1



TECHNICAL SPECIFICATION 398x800 MM / 13 MM

| S.NO. | PROPERTY | GROUP BIA - ISO 13006/EN-176 | GROUP BIA IS : 15622:2017 | OUR VALUE | TEST ACCORDING TO |
|--|---|------------------------------|--------------------------------------|--------------------------|-----------------------------|
| Dimension & surface Quality | | | | | |
| 1 | Deviation in length and width | + 0.6 % | + 0.1 % | + 0.1 % | ISO 105 452/IS 13630 (P-1) |
| 2 | Deviation in thickness | + 5 % | + 5 % | + 4 % | ISO 105 452/IS 13630 (P-1) |
| 3 | Deviation in Straightness of sides | + 0.5 % | + 0.5 % | + 0.1 % | ISO 105 452/IS 13630 (P-1) |
| 4 | Deviation in Rectangarity | + 0.6 % | + 0.1 % | + 0.1 % | ISO 105 452/IS 13630 (P-1) |
| 5 | Deviation in Surface Flatness | + 0.5 % | + 0.5 % | + 0.2 % | ISO 105 452/IS 13630 (P-1) |
| 6 | Surface Quality (%) | Minimum 95% | Minimum 95% | No visible defects | ISO 105 452/IS 13630 (P-1) |
| Physical characteristics | | | | | |
| 7 | Scratch Hardness of surface Moh's scale | Min 6 | Min. 5 | 6 | EN-101/IS 13630 (P-15) |
| 8 | Water absorption | < 0.5% | Averages 0.88 individual maximum 10% | < 1 % | ISO 105 452/IS 13630 (P-2) |
| 9 | Moisture Expansion | Nil | - | Nil | ISO 1054510 |
| 10 | Surface Abrasion Resistance | As per Mfg. | - | Min Class-4 | ISO 105457 |
| 11 | Deep Abrasion | max 175 mm ³ | Max 140 mm ³ | < 144 mm ³ | ISO 105 456/IS 13630 (P-12) |
| Mechanical characteristics | | | | | |
| 12 | Breaking Strength | Min 1300 N | Min 1300 N | > 300N | ISO 105 454/IS 13630 (P-6) |
| 13 | Modulus of rupture | > 35 N/mm ² | Averages 35 individual maximum 10% | > 40 N/mm ² | ISO 105 454/IS 13630 (P-6) |
| 14 | Impact resistance | Declared by manufacturer | Required | Min 0.55 | ISO 105 455/IS 13630 (P-14) |
| Safety characteristics | | | | | |
| 15 | Density | Min 220 gm/cc | Min 220 gm/cc | 230 gm/cc | ISO 105451 |
| 16 | Slid resistance (Friction coefficient) | > 0.4 | - | > 0.5 | ISO 1054517 |
| Thermo photo characteristics | | | | | |
| 17 | Thermal shock resistance | Resistance to 10 cycles | Min 10 cycles | Pass Min 10 cycles | ISO 105459/IS 13630 (P-5) |
| 18 | Co efficient of thermal expansion | 9x10 ⁻⁶ K Max | 6x10 ⁻⁶ K-1Max | <6x10 ⁻⁶ KMax | ISO 105458/IS 13630 (P-4) |
| 19 | Frost Resistance | Resistant | Required | Frost proof | ISO 1054512/IS 13630 (P-10) |
| 20 | Cracking Resistance | As per Mfg. | - | Min 10 cycles | ISO 1054511 |
| Chemical characteristics | | | | | |
| 21 | Stain Resistance | Min class-3 | Required | Min conform to class-4 | ISO 1054514 |
| 22 | Chemical Resistance House hold chemical & swimming pool salt | Min class-UB | Required | Conform to classes-UA | ISO 1054513/IS 13630 (P-7) |
| 23 | Chemical Resistance Low concentrations acid & alkalies | Min class-ULB | Required | Conform to classes-UA | ISO 1054513/IS 13630 (P-7) |
| 24 | Chemical Resistance High concentrations acid & alkalies | Min class-UHB | Required | Conform to classes-UA | ISO 1054513/IS 13630 (P-7) |

PACKING DETAILS

| DIMENSIONS (MM) | NO. OF TILES / BOX | COVERAGE AREA |
|-----------------|--------------------|---------------|
| 398 X 800 | 2 Pcs | 0.64 sqm |
| 398 X 398 | 4 Pcs | 0.64 sqm |



WALL & FLOOR / INDOOR / OUTDOOR

LET'S MAKE SOMETHING BEAUTIFUL





THE STONE PEOPLE

D - 200, Marble Market,
Mansarover Garden,
New Delhi - 110015.
INDIA.

+91 11 2511 1111 | +91 98739 39391
stonepeopleindia@gmail.com

www.thestonepeople.in